

100 Ossington

2ND FLOOR SPACE FOR LEASE ON THE OSSINGTON STRIP



CBRE urban retail team

100 Ossington

2ND FLOOR SPACE FOR LEASE ON THE OSSINGTON STRIP

Offering

Address: 100 Ossington Avenue, Toronto

Available Space: 2nd Floor, 8,500 SF (*Divisible*)

Net Rent: Please contact listing agents

Additional Rent: \$15.00 per sq. ft.

Availability: Immediately

Highlights

- Bright and open space with 14 + ceiling heights and skylights throughout
- Street front entrance with incredible branding opportunity
- Prime retail located on Ossington Avenue in proximity to over 265,000 residents and over 5 million SF of office
- Neighbouring tenants include Burton, Reigning Champ, Sundays Furniture, Mejuri, Melanie Auld, Mandy's Gourmet Salads, Lost & Found, Duer, Size? and Annie Aime
- Toronto's most electric restaurant and bar scene featuring La Banane, Azhar Kitchen & Bar, Mamakas, Bellwoods Brewery, Bar Koukla, La Cubana, Oddseoul, Union and Paris Paris

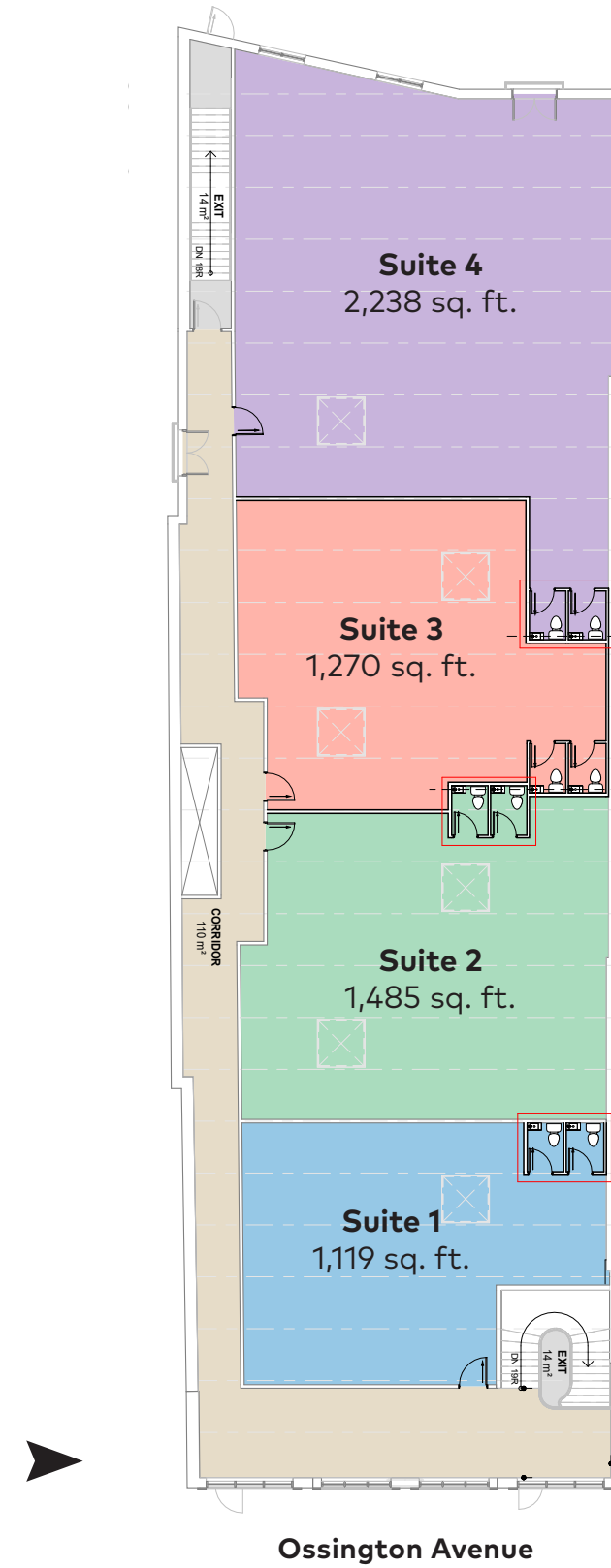
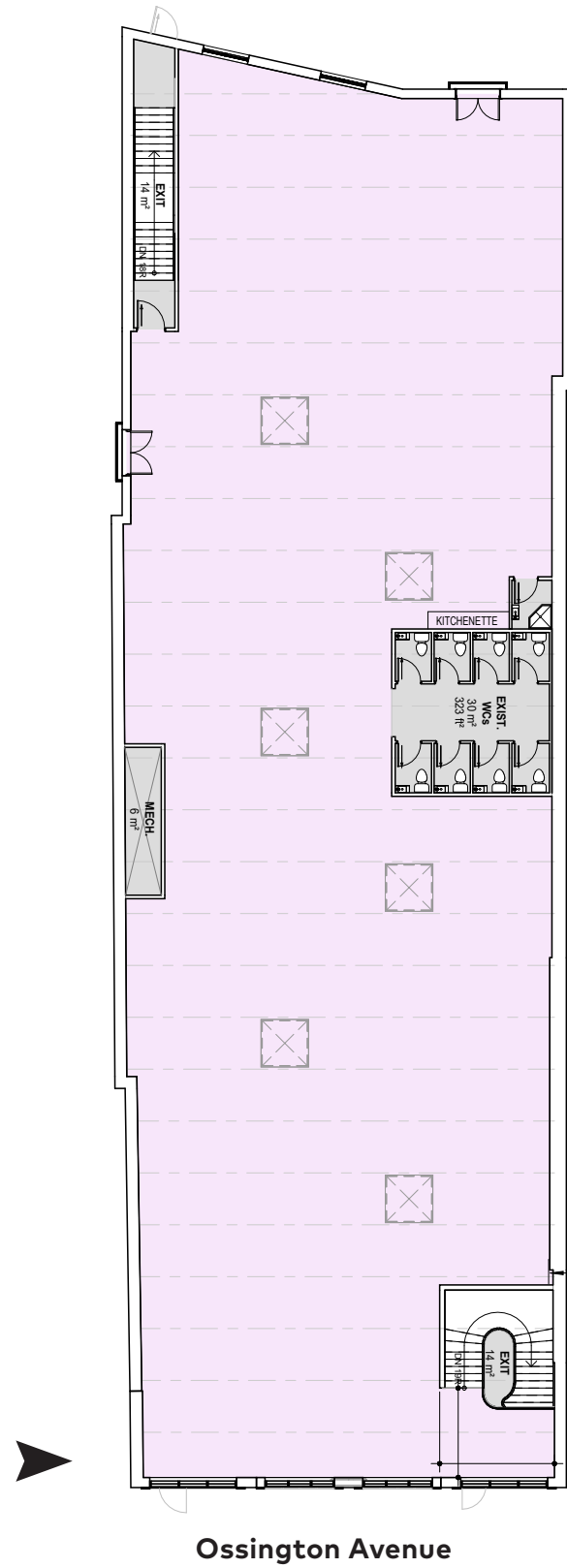
 [Neighbourhood Video](#)

CBRE urban retail team

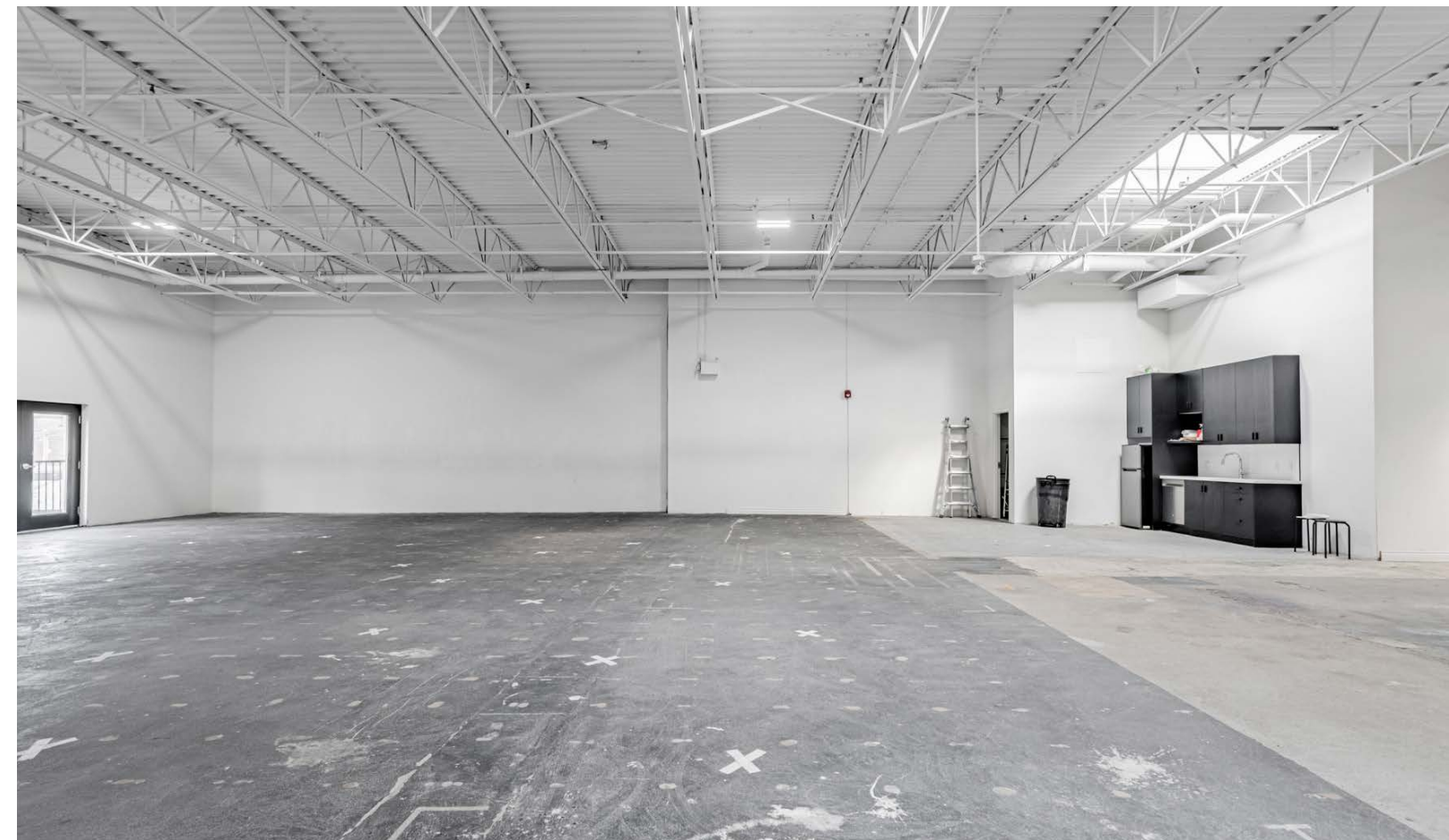
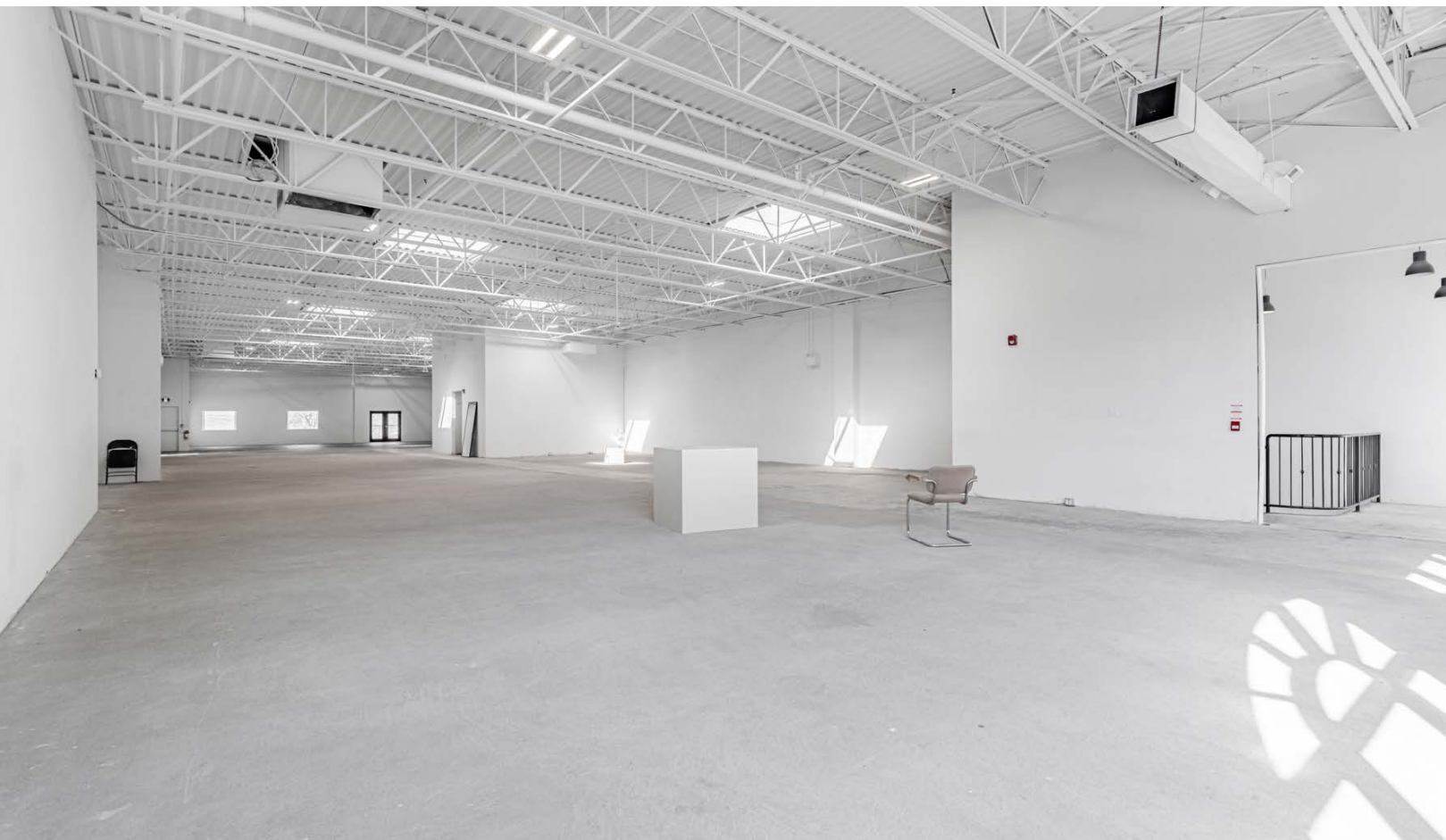


Existing Floor Plan - 8,500 SF

Demising Option



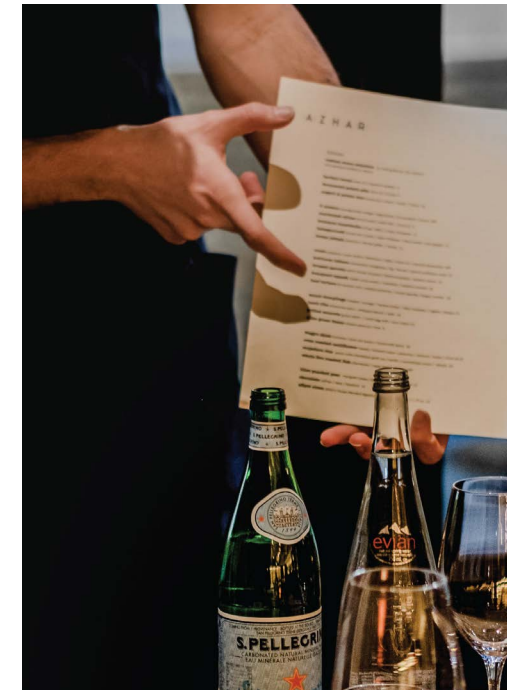
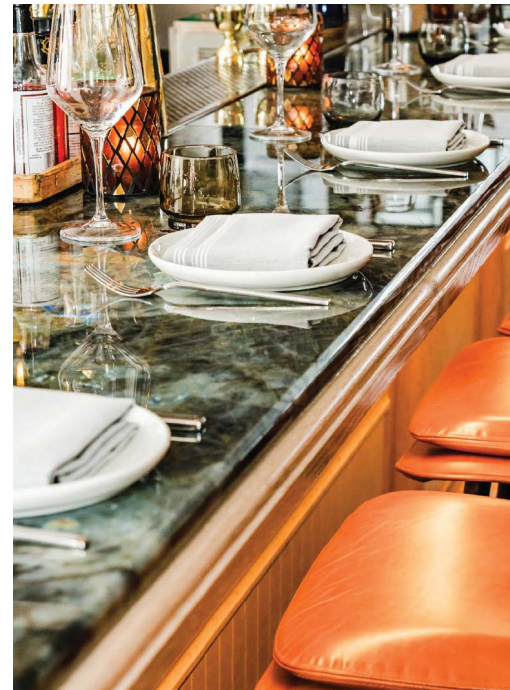
Interior Images



Ossington Ave Location Overview

The Property is ideally located on the widely popular Ossington strip, recently named one of the coolest streets in the world by TimeOut Magazine. It is located in the highly desirable Trinity Bellwoods neighbourhood in Toronto's west end.

This stretch of Ossington, between Dundas and Queen, is arguably Toronto's greatest and trendiest destinations for drinking, dining and shopping. After years of gentrification, this area is now a top Toronto destination to visit thanks to the influx of popular bars and restaurants including Mamaka's, Odd Seoul, La Cubana, Bellwoods Brewery, Boehmer, Pizzeria Libretto, Superpoint and many more. The success of the strip is also attributed to a variety of independent and national boutiques and shops that call this area home. Prominent area retailers include Reigning Champ, Mejuri, gravitypope, Area +001, Loversland, Melanie Auld, size?, The Latest Scoop and Tiger of Sweden.



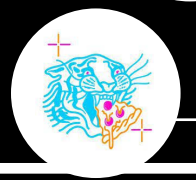


100 Ossington

ROLYAT STREET



The Haifa Room
Bar 222
The Painted Lady
La Porte
Manita



Lola Salon
Memento Film Lab
Arockafellas Hair Salon
Season Six
Superpoint
Bowie

Restaurant (coming soon)
Grit & Grace
I deal Coffee

FOXLEY STREET



Clocks & Colours
KOTN
Paris Paris

Reposado Bar
Town Moto
Cote de Boeuf



Bellwood's Brewery

Central Taps (Coming Soon)
Baby Huey
Burton
Azhar
Soos

100 OSSINGTON



La Cubana
Oddseoul
Blondies Pizza
Koukla

HUMBERT ST



Mamak's Taverna
Style Garage



Union Restaurant
Mejuri



Tiger of Sweden
Melanie Auld
Mandy's Salads
Formula Fig
Dear Grain



Public Parking
DUER
Area + 001
Lost and Found Parlour

QUEEN STREET WEST

DUNDAS STREET WEST



CIBC
Academy of Lions

La Banane
Salt Wine Bar
Pizzeria Libretto



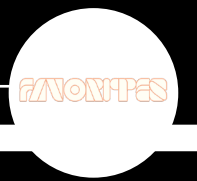
LoversLand
Foxley
Falcon Kitchens

High-End Residential Townhomes



Trinity Bellwoods Park

Favourites Thai



Rooms Coffee
Delysees Luxury Desserts
Mirari x U3
Permission Clothing Boutique



ARGYLE STREET

Golden Turtle



Pilot Coffee
The Latest Scoop
Sundays Furniture
Monos (coming soon)
Bang Bang Icecream
Boehmer
I Miss You Vintage



Tilley
Pho Tien
Carhartt WIP (coming soon)
Reigning Champ



Sweaty Betty's Bar

Jimmy's Coffee
Hobbiesville Toronto
Size?





Neighbourhood Video

Financial Core

Downtown West Office/
Entertainment District

Gardiner Expressway

Liberty Village

505 Dundas
Streetcar

Trinity Bellwoods Park

West Queen West

100
Ossington

501 Queen
Streetcar

63 Ossington
Bus

277,123
Population

35.8
Median Age

8.7%
Population Change
(2023-2028)

\$124,666
Avg. Household
Income
(3km Radius)



Retail Advisory Team

Arlin Markowitz*
Executive Vice President
416 815 2374
arlin.markowitz@cbre.com

Alex Edmison*
Senior Vice President
416 874 7266
alex.edmison@cbre.com

Jackson Turner**
Senior Vice President
416 815 2394
jackson.turner@cbre.com

Teddy Taggart*
Vice President
416 847 3254
teddy.taggart@cbre.com

Emily Everett
Sales Representative
647 943 4185
emily.everett@cbre.com

*Sales Representative **Broker

CBRE urban retail team

This disclaimer shall apply to CBRE Limited, Real Estate Brokerage, and to all other divisions of the Corporation; to include all employees and independent contractors ("CBRE"). The information set out herein, including, without limitation, any projections, images, opinions, assumptions and estimates obtained from third parties (the "Information") has not been verified by CBRE, and CBRE does not represent, warrant or guarantee the accuracy, correctness and completeness of the Information. CBRE does not accept or assume any responsibility or liability, direct or consequential, for the Information or the recipient's reliance upon the Information. The recipient of the Information should take such steps as the recipient may deem necessary to verify the Information prior to placing any reliance upon the Information. The Information may change and any property described in the Information may be withdrawn from the market at any time without notice or obligation to the recipient from CBRE. CBRE and the CBRE logo are the service marks of CBRE Limited and/or its affiliated or related companies in other countries. All other marks displayed on this document are the property of their respective owners. All Rights Reserved.