

Bird-Friendly Design Statistics



Elevation First 16m Above Grade						
	North	South	East	West	Total (m2)	Total (%)
Glazing Area (m ²)	387	550	1343	1547	3827	100%
Untreated Area (m ²)	0	0	0	0	0	0%
Treated Area (m ²)	387	550	1343	1547	3827	100%
Visual Markers (m ²)	380	539	1226	1289	3434	90%
Non-reflective glass (m ²)	7	11	23	17	58	2%
Shaded (m ²)	0	0	94	241	335	8%

Elevation First 4m Above Rooftop Vegetation*						
	North (Floor #s)	South (Floor #s)	East (Floor #s)	West (Floor #s)	Total (m2)	Total (%)
Glazing Area (m ²)					0	N/A
Untreated Area (m ²)					0	N/A
Treated Area (m ²)					0	N/A
Non-reflective glass (m ²)					0	
Visual Markers (m ²)					0	
Shaded (m ²)					0	

* Include this section only when applicable and provide relevant floor numbers for reference.

Building Window - Wall Ratio	40%
------------------------------	-----

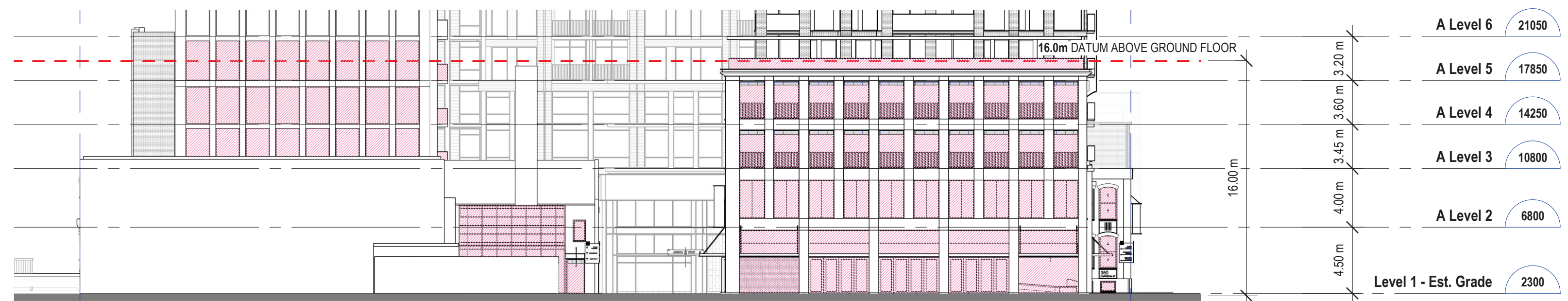
Refer to the Toronto Green Standard Version 4 Ecology section for details on bird collision deterrence treatment options.

BIRD-FRIENDLY GLAZING LEGEND
REFER TO DRAWING A410 FOR LOCATIONS OF BIRD-FRIENDLY GLAZING TREATMENTS

- GLAZING WITH LOW REFLECTANCE OR OPAQUE MATERIALS
- GLAZING WITH VISUAL MARKER
- SHADED
- UNTREATED GLAZING

VISUAL MARKER ON BIRD-FRIENDLY GLAZING
CERAMIC FRIT PATTERN TO BE APPLIED TO SURFACE #1 OF GLAZING WITH PATTERN AS SHOWN BELOW:

MIN. DIA. 5mm
CONTRASTING PATTERN



4 South Elevation - Bird Friendly Calculation
AZ454 1:250



3 North Elevation - Bird Friendly Calculation
AZ454 1:250



2 West Elevation - Bird Friendly Calculation
AZ454 1:250



1 East Elevation - Bird Friendly Calculation
AZ454 1:250

DRAWING NOT TO BE SCALED

Contractor must check and verify all dimensions on the job and report any discrepancies to the architect before proceeding with the work.

This drawing shall not be used for construction purposes until signed by the consultant responsible. This drawing, as an instrument of service, is provided by and is the property of Sweeny & Co. Architects.

ISSUED
2022-07-15 Issued for OPA/ZBA/SPA

Sweeny & Co Architects

134 PETER STREET | SUITE 1601
TORONTO, ONTARIO | M5V 2H2 | CANADA
P: 416-971-6252 | F: 416-971-5420
E: info@sweenyandco.com | www.sweenyandco.com

PROJ. NAME
340-376 Dufferin St.
Toronto, Ontario

OWNER
Hullmark

DWG TITLE
Elevations - TGS Bird Friendly Glazing Calculations

DATE: 2022-07-15
SCALE: As indicated
DRAWN: JF
CHECKED: AR
PROJ. No.: 2102

DWG No.

AZ454

Bird-Friendly Design Statistics



Elevation First 16m Above Grade						
	North	South	East	West	Total (m2)	Total (%)
Glazing Area (m ²)	387	550	1343	1547	3827	100%
Glazing Area (m ²) facing High Hazard Area	0	0	0	0	0	0%
Untreated Area (m ²)	0	0	0	0	0	0%
Treated Area (m ²)	387	550	1343	1547	3827	100%
Visual Markers (m ²)	380	539	1226	1289	3434	90%
Non-reflective glass (m ²)	7	11	23	17	58	2%
Shaded (m ²)	0	0	94	241	335	8%

Elevation First 4m Above Rooftop Vegetation*						
	North (Floor #s)	South (Floor #s)	East (Floor #s)	West (Floor #s)	Total (m2)	Total (%)
Glazing Area (m ²)					0	N/A
Untreated Area (m ²)					0	N/A
Treated Area (m ²)					0	N/A
Non-reflective glass (m ²)					0	
Visual Markers (m ²)					0	
Shaded (m ²)					0	

* Include this section only when applicable and provide relevant floor numbers for reference.

Building Window - Wall Ratio	40%
------------------------------	-----

Refer to the Toronto Green Standard Version 4 Ecology section for details on bird collision deterrence treatment options.

BIRD-FRIENDLY GLAZING LEGEND
REFER TO DRAWING A410 FOR LOCATIONS OF BIRD-FRIENDLY GLAZING TREATMENTS

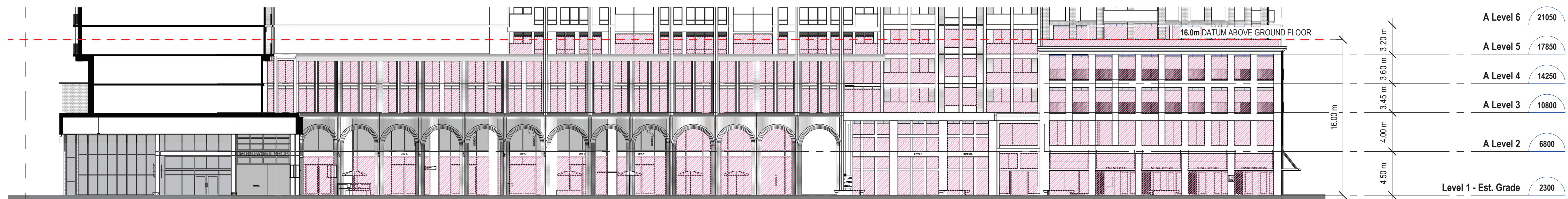
- GLAZING WITH LOW REFLECTANCE OR OPAQUE MATERIALS
- GLAZING WITH VISUAL MARKER
- SHADED
- UNTREATED GLAZING

VISUAL MARKER ON BIRD-FRIENDLY GLAZING
CERAMIC FRIT PATTERN TO BE APPLIED TO SURFACE #1 OF GLAZING WITH PATTERN AS SHOWN BELOW:

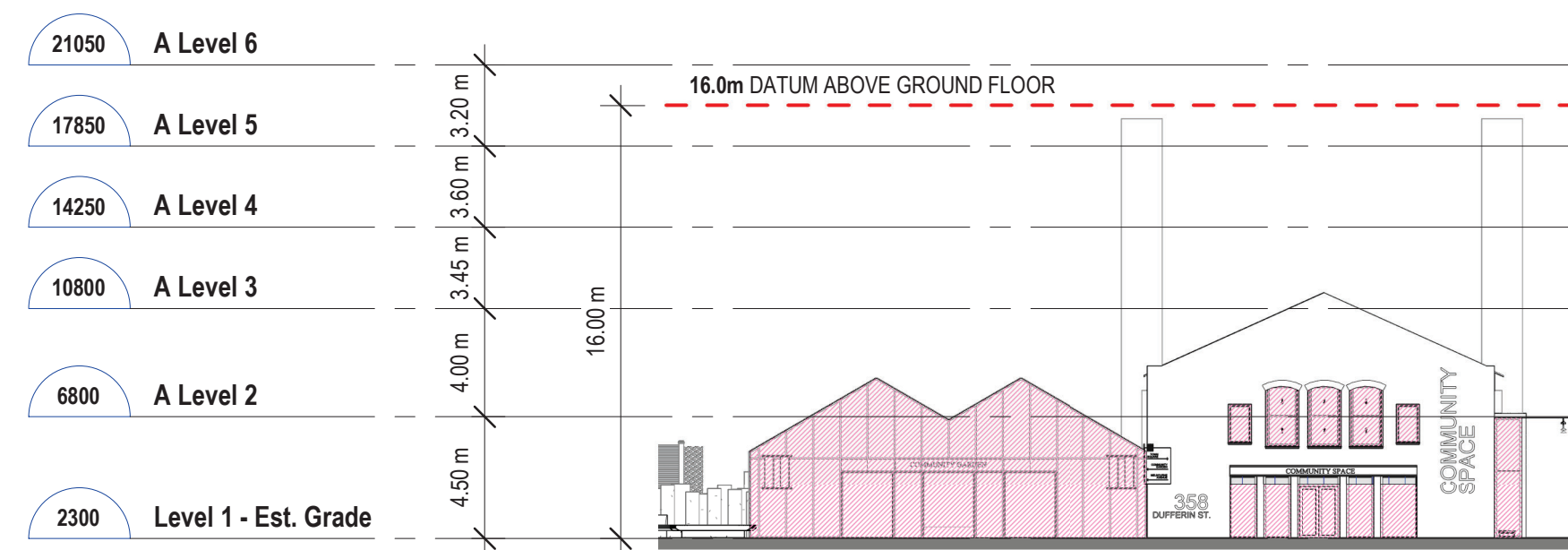
MIN. DIA. 5mm
CONTRASTING PATTERN



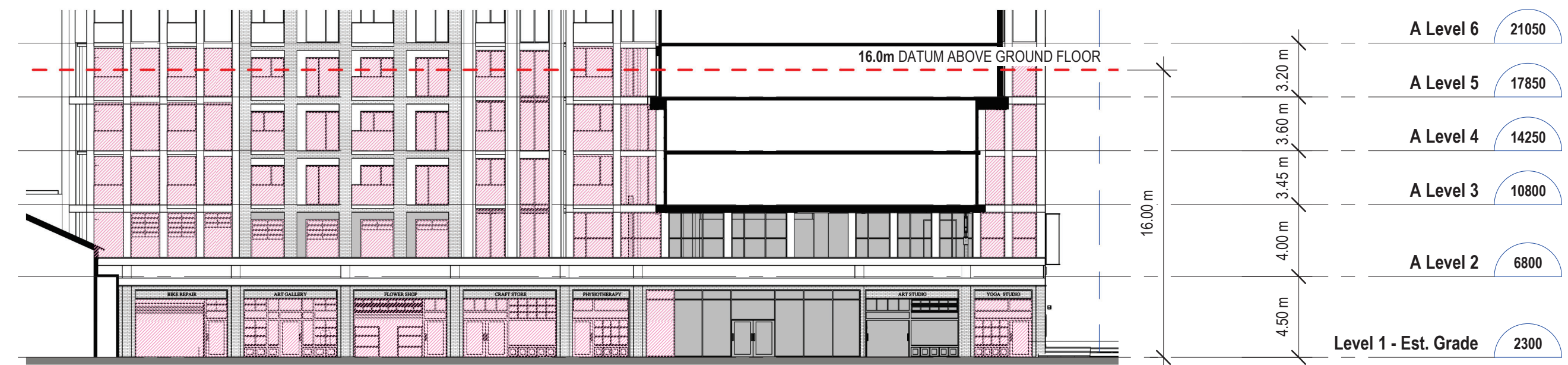
4 South Elevation - Bird Friendly Calculation - Courtyard
AZ455 1:250



3 West Elevation - Bird Friendly Calculation - Courtyard
AZ455 1:250



2 East Elevation - Bird Friendly Calculation - Courtyard_Detail 2
AZ455 1:250



1 East Elevation - Bird Friendly Calculation - Courtyard_Detail 1
AZ455 1:250

DRAWING NOT TO BE SCALED

Contractor must check and verify all dimensions on the job and report any discrepancies to the architect before proceeding with the work.

This drawing shall not be used for construction purposes until signed by the consultant responsible. This drawing, as an instrument of service, is provided by and is the property of Sweeny & Co. Architects.

ISSUED

2022-07-15 Issued for OPA/ZBA/SPA

Sweeny&Co Architects

134 PETER STREET | SUITE 1601
TORONTO, ONTARIO | M5V 2H2 | CANADA
P: 416-971-6252 | F: 416-971-5420
E: info@sandco.com | www.sweenyandco.com

PROJ. NAME
340-376 Dufferin St.
Toronto, Ontario

OWNER
Hullmark

DWG TITLE
Elevations - TGS Bird Friendly Glazing Calculations

DATE : 2022-07-15
SCALE : As indicated
DRAWN : JF
CHECKED : AR
PROJ. No. : 2102

DWG No.

AZ455

DRAWING NOT TO BE SCALED

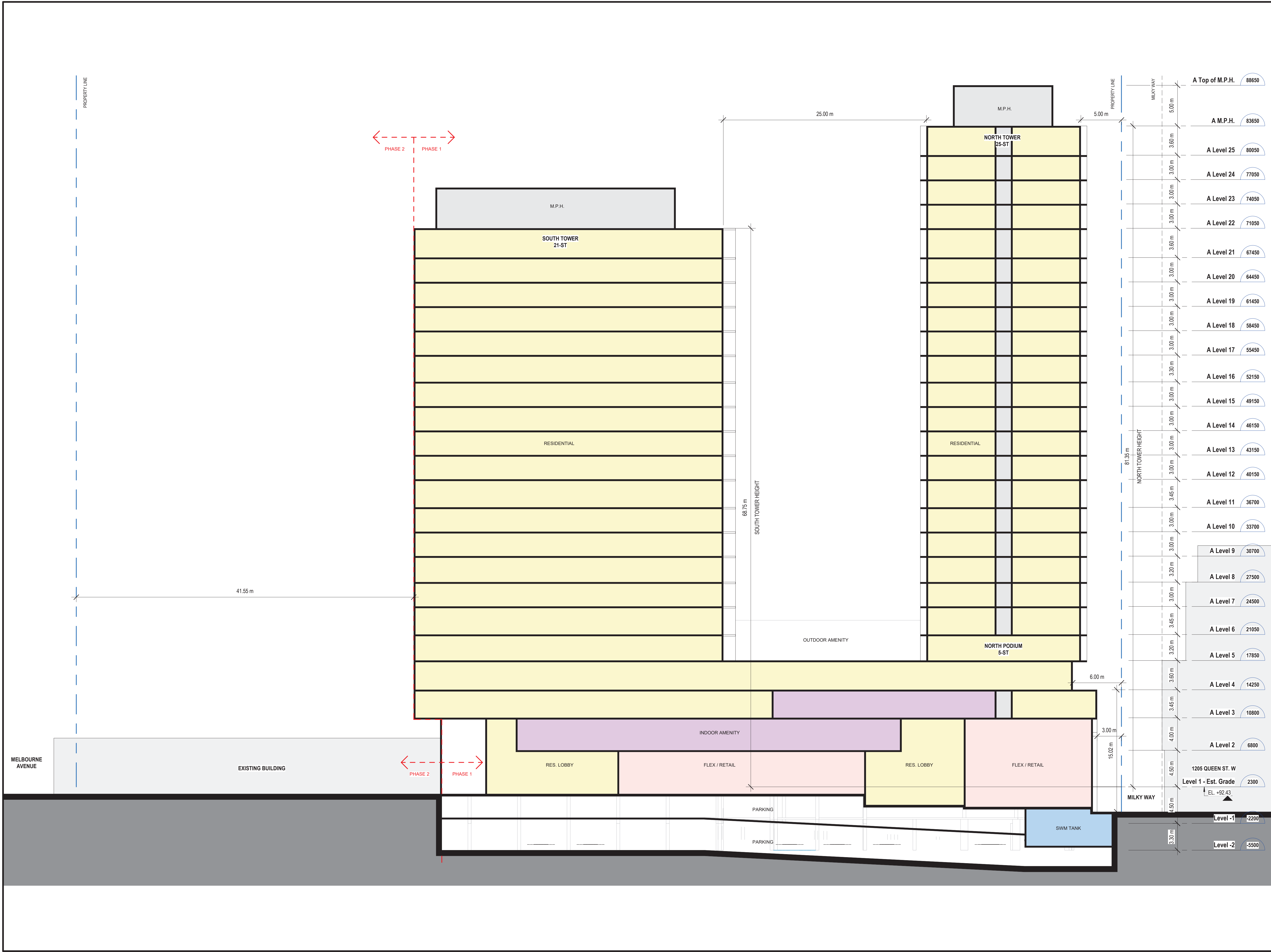
Contractor must check and verify all dimensions on the job and report any discrepancies to the architect before proceeding with the work.

This drawing shall not be used for construction purposes until signed by the consultant responsible. This drawing, as an instrument of service, is provided by and is the property of Sweeny & Co. Architects.

ISSUED

2022-07-15 Issued for OPA/ZBA/SPA

C:\Users\atillio\Documents\2102_340-376 Dufferin St_Central_attilino3ASRN.rvt 2022-07-19 11:55:22 AM



A Top of M.P.H.	88650
A M.P.H.	83650
A Level 25	80050
A Level 24	77050
A Level 23	74050
A Level 22	71050
A Level 21	67450
A Level 20	64450
A Level 19	61450
A Level 18	58450
A Level 17	55450
A Level 16	52150
A Level 15	49150
A Level 14	46150
A Level 13	43150
A Level 12	40150
A Level 11	36700
A Level 10	33700
A Level 9	30700
A Level 8	27500
A Level 7	24500
A Level 6	21050
A Level 5	17850
A Level 4	14250
A Level 3	10800
A Level 2	6800
1205 QUEEN ST. W	
Level 1 - Est. Grade	2300
EL. +92.43	
Level -1	-2200
Level -2	-5500

Sweeny&Co Architects

134 PETER STREET | SUITE 1601
 TORONTO, ONTARIO | M5V 2H2 | CANADA
 P: 416-971-6252 | F: 416-971-5420
 E: info@sandco.com | www.sweenyandco.com

PROJ. NAME
340-376 Dufferin St.
 Toronto, Ontario

OWNER
Hullmark

DWG TITLE
Building Sections_North-South - Phase 1

DATE : 2022-07-15
 SCALE : 1 : 200
 DRAWN : AR, MDL
 CHECKED : HH
 PROJ. No. : 2102

DWG No.
AZ501

DRAWING NOT TO BE SCALED

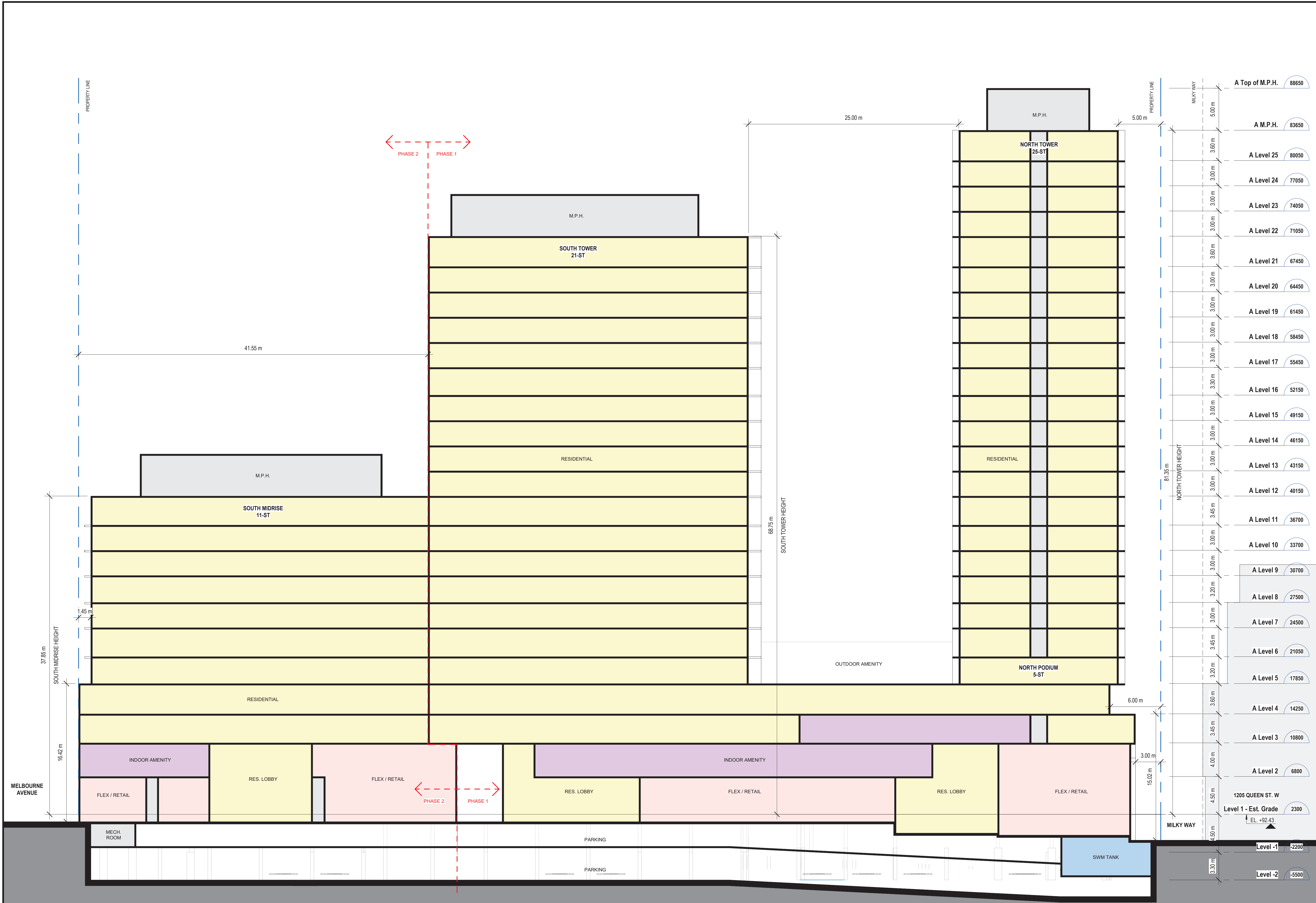
Contractor must check and verify all dimensions on the job and report any discrepancies to the architect before proceeding with the work.

This drawing shall not be used for construction purposes until signed by the consultant responsible. This drawing, as an instrument of service, is provided by and is the property of Sweeny & Co. Architects.

ISSUED

2022-07-15 Issued for OPA/ZBA/SPA

C:\Users\alillio\Documents\2102_340-376 Dufferin St_Central_attlino3ASRN.rvt
2022-07-19 11:55:24 AM



A Top of M.P.H.	88650
A M.P.H.	83650
A Level 25	80050
A Level 24	77050
A Level 23	74050
A Level 22	71050
A Level 21	67450
A Level 20	64450
A Level 19	61450
A Level 18	58450
A Level 17	55450
A Level 16	52150
A Level 15	49150
A Level 14	46150
A Level 13	43150
A Level 12	40150
A Level 11	36700
A Level 10	33700
A Level 9	30700
A Level 8	27500
A Level 7	24500
A Level 6	21050
A Level 5	17850
A Level 4	14250
A Level 3	10800
A Level 2	6800
1205 QUEEN ST. W	2300
Level 1 - Est. Grade	EL. +92.43
Level -1	-2200
Level -2	-5500

Sweeny&Co Architects

134 PETER STREET | SUITE 1601
TORONTO, ONTARIO | M5V 2H2 | CANADA
P: 416-971-6252 | F: 416-971-5420
E: info@sandco.com | www.sweenyandco.com

PROJ. NAME
340-376 Dufferin St.
Toronto, Ontario

OWNER
Hullmark

DWG TITLE
Building Sections_North-South - Phase 2

DATE : 2022-07-15
SCALE : 1 : 200
DRAWN : AR, MDL
CHECKED : HH
PROJ. No. : 2102

DWG No.
AZ502

C:\Users\atillia\Documents\2102_340-376 Dufferin St_Central_attino3\ASRN.rvt
2022-07-19 11:55:25 AM



A Top of M.P.H.	88650
A M.P.H.	83650
A Level 25	80050
A Level 24	77050
A Level 23	74050
A Level 22	71050
A Level 21	67450
A Level 20	64450
A Level 19	61450
A Level 18	58450
A Level 17	55450
A Level 16	52150
A Level 15	49150
A Level 14	46150
A Level 13	43150
A Level 12	40150
A Level 11	36700
A Level 10	33700
A Level 9	30700
A Level 8	27500
A Level 7	24500
A Level 6	21050
A Level 5	17850
A Level 4	14250
A Level 3	10800
A Level 2	6800
Level 1 - Est. Grade	2300
Level 1 Lower	-170
Level -1	-2200
Level -2	-5500

DRAWING NOT TO BE SCALED
Contractor must check and verify all dimensions on the job and report any discrepancies to the architect before proceeding with the work.
This drawing shall not be used for construction purposes until signed by the consultant responsible. This drawing, as an instrument of service, is provided by and is the property of Sweeny & Co. Architects.

ISSUED
2022-07-15 Issued for OPA/ZBA/SPA

Sweeny&Co Architects

134 PETER STREET | SUITE 1601
TORONTO, ONTARIO | M5V 2H2 | CANADA
P: 416-971-6252 | F: 416-971-5420
E: info@sweenyandco.com | www.sweenyandco.com

PROJ. NAME
340-376 Dufferin St.
Toronto, Ontario

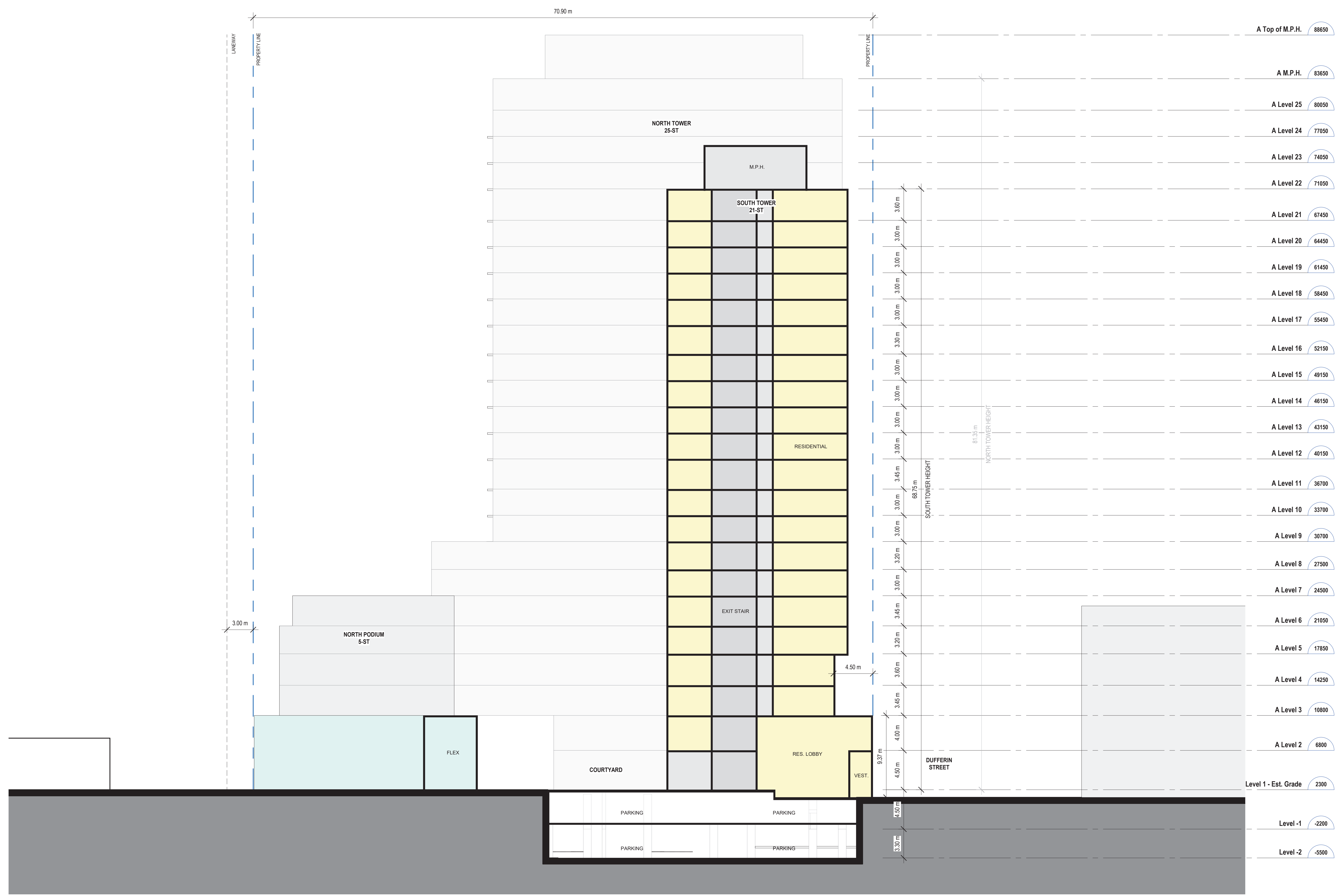
OWNER
Hullmark

DWG TITLE
**Building Sections_East-West
(North Tower)**

DATE : 2022-07-15
SCALE : 1 : 200
DRAWN : AR, MDL
CHECKED : HH
PROJ. No. : 2102

DWG No.
AZ503

C:\Users\atlilla\Documents\2102_340-376 Dufferin St_Central_attlino3\ASRN.rvt
2022-07-19 11:55:26 AM



A Top of M.P.H.	88650
A M.P.H.	83650
A Level 25	80050
A Level 24	77050
A Level 23	74050
A Level 22	71050
A Level 21	67450
A Level 20	64450
A Level 19	61450
A Level 18	58450
A Level 17	55450
A Level 16	52150
A Level 15	49150
A Level 14	46150
A Level 13	43150
A Level 12	40150
A Level 11	36700
A Level 10	33700
A Level 9	30700
A Level 8	27500
A Level 7	24500
A Level 6	21050
A Level 5	17850
A Level 4	14250
A Level 3	10800
A Level 2	6800
Level 1 - Est. Grade	2300
Level -1	-2200
Level -2	-5500

DRAWING NOT TO BE SCALED
Contractor must check and verify all dimensions on the job and report any discrepancies to the architect before proceeding with the work.
This drawing shall not be used for construction purposes until signed by the consultant responsible. This drawing, as an instrument of service, is provided by and is the property of Sweeny & Co. Architects.

ISSUED
2022-07-15 Issued for OPA/ZBA/SPA

Sweeny&Co Architects

134 PETER STREET | SUITE 1601
TORONTO, ONTARIO | M5V 2H2 | CANADA
P: 416-971-6252 | F: 416-971-5420
E: info@sandco.com | www.sweenyandco.com

PROJ. NAME
340-376 Dufferin St.
Toronto, Ontario

OWNER
Hullmark

DWG TITLE
Building Sections_East-West (South Tower)

DATE : 2022-07-15
SCALE : 1 : 200
DRAWN : AR, MDL
CHECKED : HH
PROJ. No. : 2102 DWG No.

AZ504

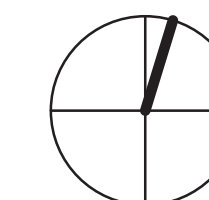
DRAWING NOT TO BE SCALED

Contractor must check and verify all dimensions on the job and report any discrepancies to the architect before proceeding with the work.

This drawing shall not be used for construction purposes until signed by the consultant responsible. This drawing, as an instrument of service, is provided by and is the property of Sweeny & Co. Architects.

ISSUED

2022-07-15 Issued for OPA/ZBA/SPA



A Top of M.P.H.	88650
A M.P.H.	83650
A Level 25	80050
A Level 24	77050
A Level 23	74050
A Level 22	71050
A Level 21	67450
A Level 20	64450
A Level 19	61450
A Level 18	58450
A Level 17	55450
A Level 16	52150
A Level 15	49150
A Level 14	46150
A Level 13	43150
A Level 12	40150
A Level 11	36700
A Level 10	33700
A Level 9	30700
A Level 8	27500
A Level 7	24500
A Level 6	21050
A Level 5	17850
A Level 4	14250
A Level 3	10800
A Level 2	6800
Level 1 - Est. Grade	2300
Level -1	-2200
Level -2	-5500

Sweeny&Co Architects

134 PETER STREET | SUITE 1601
 TORONTO, ONTARIO | M5V 2H2 | CANADA
 P: 416-971-6252 | F: 416-971-5420
 E: info@sandco.com | www.sweenyandco.com

PROJ. NAME
340-376 Dufferin St.
 Toronto, Ontario

OWNER
Hullmark

DWG TITLE
**Building Sections_East-West
 (South Podium)**

DATE : 2022-07-15
 SCALE : 1 : 200
 DRAWN : Author
 CHECKED : Checker
 PROJ. No. : 2102

DWG No.
AZ505